

PROSPECTUS



Ysgol Gymraeg Aberystwyth



Ysgol Gymraeg Aberystwyth

Prospectus

(Revised July 2010)



SCHOOL NAME AND ADDRESS

Yr Ysgol Gymraeg
Coedlan Plascrug
Aberystwyth
Ceredigion
SY23 1HL

Phone Number:- Aberystwyth 01970 617613

Fax Number:- 01970 636742

E-mail:- admin.ysgolgybraeg@ceredigion.gov.uk

School website:- www.ysgolgybraeg.com





Ysgol Gymraeg
Aberystwyth

HEADTEACHER

Mr Clive Williams

*Dear Parent/Guardian,
Welcome to Ysgol Gymraeg Aberystwyth. This was the first designated Welsh medium school in Wales which was established in 1939 by Syr Ifan ab Owen Edwards. There were only seven pupils in the school during the early years but by now the school has grown to 350 pupils. The children come from the town of Aberystwyth and the surrounding rural areas.*

The school grew constantly during the eighties and nineties as more and more parents saw the value of a Welsh medium education. There is a marked increase in the number of non Welsh speaking parents that send their children to the school as they see the advantages of bilingualism.



The governors in conjunction with the Education Authority have worked closely to ensure an appropriate building and purposeful resources in order to address the growth in the number of pupils. There are 18 teachers and over 20 support staff working in the school as well as 15 auxiliary staff. The team is enthusiastic and works conscientiously to raise standards and continually improve the school.

We take pride in the school's high standard of achievement and the wide range of extra-curricular activities offered is also important to us, with pupils experiencing success in a variety of fields from the Urdd eisteddfod to sporting activities and art. Our aim is to develop the whole child and to create a safe, happy and Welsh environment so that we can ensure the best of our heritage and culture is safeguarded and developed in the years to come. Read on for more information, or contact us to arrange a visit to experience the ethos of this vibrant and busy school.

*RC Williams
Headteacher*

The headteacher is available to deal with any queries that may arise. We suggest that you contact the school to make an appointment before hand. In his absence the deputy is responsible for the management of the school.

THE SCHOOL'S GOVERNORS

Chair of Governors: Mr Clem Thomas

1 Cysgod y Bryn
Dyffryn Paith
Aberystwyth
Ceredigion
SY23 4LR

Please find enclosed a list of Governors and Teachers. Their names are also displayed on the school's notice board. Notes of Governors' meetings are also displayed.

TYPE OF SCHOOL

Designated Welsh Primary School 3-11

THE SCHOOL SITE

The School stands on the outskirts of Aberystwyth, about half a mile to the east, in Plascrug, and enjoys splendid views. The school was opened in 1989, and by now there are over 350 pupils on the register. The luxurious extension has ensured that there is adequate space for two classes in each year group. Hard and soft playing areas have been allocated for the Nursery Unit, and an extensive playground and playing fields for the rest of the school. The School Council works closely with the Governors to ensure that the school's environment encourages the children's motivation and reflects pupils' opinions.

HEALTH AND SAFETY

Every possible care is taken to ensure children's safety whilst they are at the school. If a child is taken ill, or involved in an accident, the parents are contacted and, if needed, the child will then be taken to the Casualty Department at Bronglais Hospital.

Medicine will be administered to children in special instances only and on the receipt of written instructions from the parent.

No child is allowed to leave the school early without permission. If there is a change to normal arrangements, the parents are requested to inform the Headmaster or the child's class teacher before hand.

The school regularly reviews health and safety arrangements for pupils and staff. Every visitor must visit the main entrance before gaining access to the school. Visitors are given an identification card by the Administration Officer. If a visitor acts inappropriately towards a pupil or member of staff than they're asked to leave the school campus immediately and the police informed if needed. The school has a burglar alarm system and fire drills are held each term.



Ysgol Gymraeg
Aberystwyth





Ysgol Gymraeg
Aberystwyth

TRAVELLING TO SCHOOL SCHEME

The school encourages parents to walk, cycle or share lifts when bringing their children to school. We ask for everyone's cooperation in ensuring the children's safety. The school's Eco Committee stress the need for parents to think of the environment when considering ways of travelling to school.

Parking along the road leading to the school is restricted to Nursery Unit parents only. Other parents can leave their cars in the Leisure Centre's car park or in the car park by Mudiad Ysgolion Meithrin's Centre. Parking outside the main entrance has been set aside for buses, taxis and the disabled. Parents are not permitted to park in the staff car park. Everyone should drive carefully and sensibly near the school site.

ETHOS AND VALUES

There are three things which are important for us at the school:

- Appreciation of the Welsh language and culture
- Respecting each other
- Try our very best



AIM

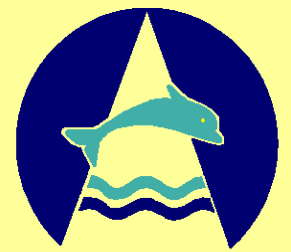
The school's aim is to create situations and to supply resources which will allow each child to develop an integral personality and to develop and utilise his or her talents. These situations and resources will provide for each child, according to age, ability and interest, and will help them become responsible and participating members of a bilingual society - members who can contribute and gain from their society, co-existing in a spirit of peace and friendship with his/her co-citizens.

This involves:

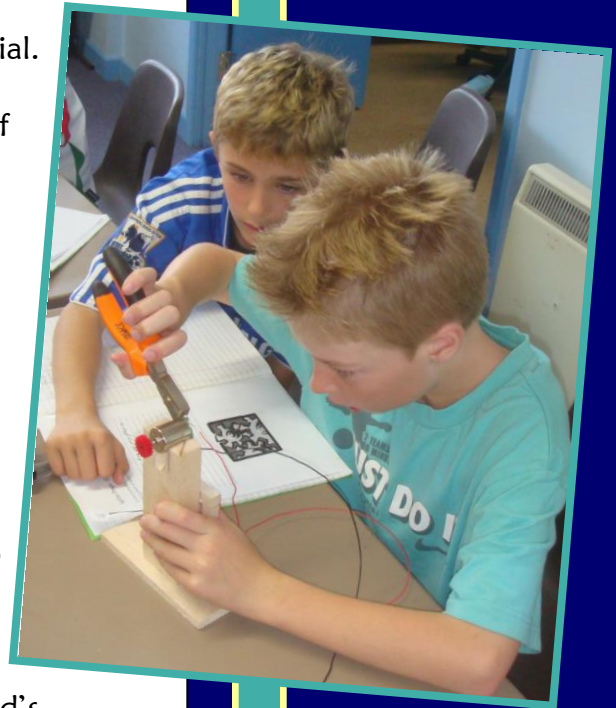
- 1) Enabling every child to develop to his or her full potential.
- 2) Ensuring that every child is introduced to the heritage of Wales.
- 3) Providing every child with the opportunity to develop fully in a rapidly changing society.

General aims of the School:

- 1) Every child should feel safe and content in a homely atmosphere.
- 2) Every child should be given the opportunity to develop to his or her full potential in all aspects of the curriculum.
- 3) To provide a meaningful education, relevant to the child's experience in the community.
- 4) The school should promote and develop bilingualism.
- 5) The school should offer every pupil an equal opportunity.
- 6) The school should promote contact and co-operation with parents.
- 7) The school should encourage a respect for property and for other people.
- 8) The school should stimulate contact with the community.
- 9) The school should place an emphasis on good behaviour, courtesy and appearance.
- 10) The school should foster dedicated and enthusiastic teaching staff.



Ysgol Gymraeg
Aberystwyth





Ysgol Gymraeg
Aberystwyth

HOME/SCHOOL AGREEMENT

The school has a 'Home/School Agreement' which notes what we expect in terms of parent/guardian and pupil engagement to supporting the school, as well as the school's engagement to providing the best service for parents/guardians.

SCHOOL HOURS

Morning:	9.00 - 12.00
Playtime:	10.30 - 10.45
Lunchtime:	12.00 - 1.00 (11.45 - 1.00 Key Stage 1)

Afternoon:	1.00 - 3.30
Playtime:	2.15 - 2.30

Children will be supervised for 15 minutes at the beginning and end of the day. Punctuality is appreciated for everyone's convenience. Details of holidays and activities are displayed and distributed to parents at the beginning of each term.



YSGOL GYMRAEG ABERYSTWYTH ADMISSIONS POLICY

All individual schools have an admissions number. For this school the admissions number is 51. Transfer from Meithrin Iau (Younger Nursery) to Meithrin Hŷn (Older Nursery) is not automatic and since the Ceredigion Education Authority is the Admissions Authority, the Authority considers all applications. If the number of applications exceeds the admissions number (i.e. 51) the following shall be considered in order of priority:

- The number of children we're able to accept at the school (i.e. the school's admissions number for each school year).
- Whether the parents have indicated their priorities in writing.
- The geographical area of the school (the defined catchment area). Ysgol Gymraeg Aberystwyth's catchment area is defined (according to the local Education Authority) as the area serving Plascrug, Llwyn yr Eos, Cwmpadarn, Comins Coch and St Padarns School.
- Whether the prospective pupil has any siblings at the school.

Therefore to apply for a place in the school applications must be submitted to Ceredigion County Council through the school before 30th April each year. A waiting list cannot be compiled. The appropriate forms will be available at the school or from the Education Office. For more information visit Ceredigion County Council's website:

<http://ceredigion.gov.uk/>

RECEPTION OF CHILDREN

Children are received into the Nursery Unit on a part time basis during the year following their third birthday. Parents are invited to meet staff at the Unit during the term before their children begin. Before the children become full time (the term following their fourth birthday) their application is considered by the School's Admissions Committee, i.e. the Headmaster, the Chairman and Vice-Chairman of the Governing Body. The applications are considered in accordance with the guidelines of the admissions policy.

The children are transferred at 11 years either to Penweddig Bilingual Comprehensive or Penglais Comprehensive, Aberystwyth. There are established administrative links between the two schools and children are given the opportunity to visit the schools prior to their transfer.





Ysgol Gymraeg
Aberystwyth

ABSENCES

Every parent is advised to ensure that each child attends school regularly. A note or e-mail explaining every absence is appreciated in order to avoid official enquiries. Even a short absence can have an adverse effect on your child's education.

e.g. My child was absent because . . .

Signature of Parent: _____

TEACHING AND LEARNING

TEACHERS AND STAFF

The main resource in any school is its teaching staff, and their ability to create and maintain a happy relationship with the children. We are fortunate in having teaching staff who believe that the quality of the relationship between teacher and pupil enhances the child's academic and personal development. We believe that a successful teacher will get to know pupils as individuals, and be aware of their lives outside the school, and will be at all times prepared to respect and commend their experiences and endeavours in coming to terms with the world. A successful teacher will be eager to promote the children's individual goals in life.

“The school's aim is to foster citizenship, a Christian way of life and a love of beauty, based on the culture of Wales.”

This was the ambition of Miss Norah Isaac, Ysgol Gymraeg's first headmistress when she taught children fifty years ago, and this remains the foundation of the education provided by the school today.

Ysgol Gymraeg Aberystwyth is as old as Welsh medium education throughout Wales, since Ysgol Gymraeg Aberystwyth was the first official Welsh medium school. As well as striving for the highest academic standards, Ysgol Gymraeg has continuously immersed its pupils in Welsh culture, and has won innumerable prizes in the Urdd Eisteddfod for singing, singing to harp accompaniment (cerdd dant), action songs, percussion bands, drama and recitation. A number of pupils have also been members of the county orchestra and there has always been an enthusiastic approach to sports and athletics. The school has recently won the national 'Sportmarc' award for excellence in physical education. Over the years, pupils from the school have won many national competitions, all of which demonstrate the way in which the school has, and continues to provide a full and valuable education.

As the school is now part of the Plascrug education and leisure campus, we look forward to further success in the future, as a tradition established fifty years ago continues to flourish and expand.



THE SCHOOL CURRICULUM

A broad, balanced curriculum is delivered which enhances the spiritual, moral, mental, social, physical and emotional development of the child. This is achieved mainly by means of a thematic approach. The documents can be viewed in the Headmaster's room.

USE OF WELSH LANGUAGE

Since it is a designated Welsh school, Welsh is the official language of the school and it is used for every aspect of the curriculum. Welsh will be the main medium of education and life in the Nursery and Infant sections so that the children acquire a sound grounding in the language. Welsh will be the main medium of education and school life in the Junior section, and English is initially introduced between the end of Key Stage 1 (Infants) and Key Stage 2 (Juniors) so that there is an opportunity for the pupils to become completely bilingual by the time they leave the school at the age of 11. It is the school's privilege and advantage to be able to enjoy cultural riches through the medium of two languages.

LANGUAGE

Language has a unique influence on a child's development and is the basis of all learning. We endeavour to foster a positive attitude towards language by offering the child a variety of experiences which will stimulate a sensible, intelligent and lively response, thereby developing linguistic ability in all its passive and active aspects, in both languages. We encourage children to take an interest in literature in all its forms, ensuring that the experience of reading, listening, watching and responding are always pleasurable and satisfying. In this way, we create in the child an awareness of the value of Welsh heritage so that she/he may empathise with the richness of his/her (indigenous or adopted) cultural background, as well as encouraging respect for other cultures.

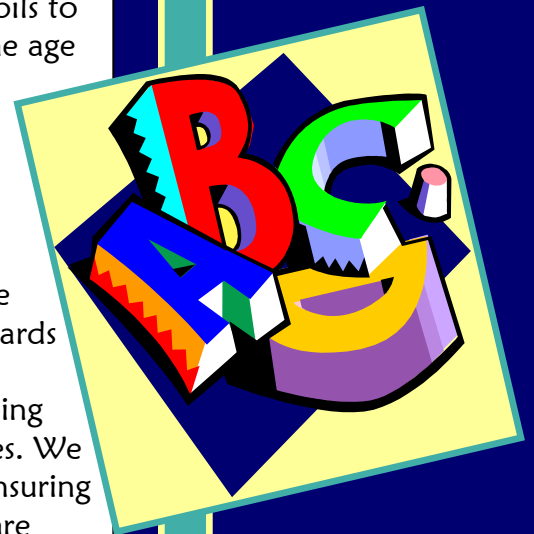
Basically, we develop four linguistic elements, namely listening, speaking, reading and writing:

LISTENING

To develop a child's ability to listen effectively in crowd, group and individual situations for pleasure or entertainment, to respond to instructions, and to respond creatively.

SPEAKING

To develop a child's ability to speak clearly, intelligibly, confidently and correctly using language appropriate to the situation.





Ysgol Gymraeg
Aberystwyth

READING

To nurture children to be readers from the outset so that they may:

- read for pleasure or entertainment
- enhance their understanding
- acquire information;
- develop the ability to be critical in their reading and to appreciate good books.



WRITING

To provide the child with the opportunity to respond in writing to different experiences and situations and to write for different purposes so that she/he may:

- use writing as medium to come to terms with his/her world;
- use writing to enhance his/her understanding;
- choose and use an appropriate form of writing for a particular purpose.

NUMERACY/MATHEMATIC

Mathematical ideas and techniques are an essential part of everyday life and contribute considerably to our understanding of the world around us.

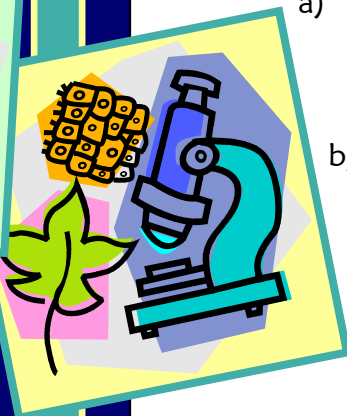
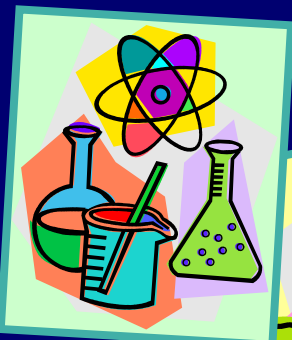
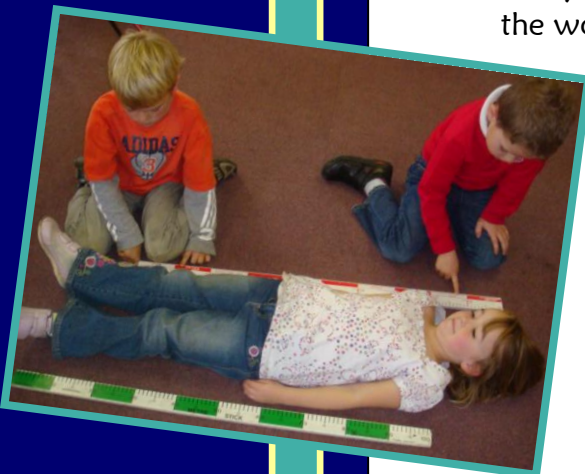
The school aims to develop a positive attitude to mathematics as an interesting subject to be enjoyed. We endeavour to develop in the child the ability to think clearly and logically with confidence and adaptability, skills which will allow him/her to express ideas lucidly, to discuss a subject with confidence and to use mathematical language when applying skills and knowledge to situations at home, at school and in society.

SCIENCE

Science is part of life and the child will develop:

- a) an analytical and critical mind through logical methods of discovery based on observation, hypothesis and experimentation;
- b) an understanding of living things and the basic processes of life;
- c) an understanding of the means by which environmental resources can be used and developed.

Matters relating to sex education are dealt with sensitively in Personal and Social Education and Science lessons.



INFORMATION TECHNOLOGY

The new directive has given Information Technology an important status, along with a clear description of the nature of the subject. An ability in Information Technology means an ability to use Information Technology equipment and sources effectively in order to analyse, process and present information and to model, measure and control external events. In Yr Ysgol Gymraeg emphasis is placed on developing I.T. across the spectrum of National Curriculum subjects. Computers are considered as trans-curricular pieces of equipment. The school has continually improved I.T. resources and this includes a wireless connection throughout the school.

THE ARTS

The arts are an expression of man's perception of the beauty of the world through the utilisation of his senses to observe and to imagine, to marvel and to create. We hold a firm belief that the arts are highly important to a child's development and we will stimulate him or her to take part in musical, dramatic, movement and design, craft and technological activities. By encompassing the arts as an integrated element of the school day we provide children with an opportunity to exercise their imagination, their originality and their curiosity.

We support the workshops held by the Aberystwyth Arts Centre.



ENVIRONMENTAL STUDIES

We are all part of a society and environment which are interdependent, and therefore, an awareness of that society, its qualities and its needs, and a knowledge and understanding of the environment are a natural part of the child's development process. At Ysgol Gymraeg Aberystwyth, we concentrate on developing four aspects we hope to develop within the child.

SOCIAL ASPECTS

To develop an awareness of specific elements that are part of the fabric of society and their interdependence.

HISTORICAL ASPECTS

To develop an awareness of history based on local evidence, and to encourage children's interest in the way in which the past has influenced the present.

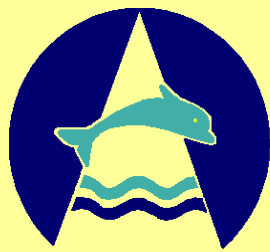
ASPECTS OF THE NATURE WORLD

To stimulate the children's interest in all aspects of the natural world and to encourage their ability to appreciate and respect it, and to be aware of their responsibility for it.

GEOGRAPHICAL ASPECTS

To encourage the children's interest in landscape, climate and major geographical features of the environment, and to consider their influence on the existence and location of society





Ysgol Gymraeg
Aberystwyth

PHYSICAL EDUCATION

The school provides a stimulating and secure environment for pupils where they can aim to achieve general maturity and develop physical skills. Activities offered provide pleasure as well as fulfilling creative needs. We teach and provide an opportunity to practise and improve those skills that are relevant to the activity.

We also attempt to develop a social awareness along with a social training through individual expression. We aim to promote confidence through physical activity and to develop an awareness of the importance of health through exercise.

Physical Education should be enjoyable so that pupils are interested and ready to participate in various activities. Hence we hope to develop an awareness and appreciation of the environment.

The school offers training in numerous activities including gymnastics, dance, games, swimming, athletics and adventure activities. In the early years, and in Key Stage 1, every pupil will have one hour of Physical Education per week. By Key Stage 2, the children will spend at least an hour and a quarter each week in Physical Education lessons. On top of this there are further weekly training sessions after school hours. These activities are held on the school fields, the netball courts or in the swimming pool at Plascrug Leisure Centre.

The school has several teams which gives pupils the opportunity to participate in competitions as individuals or as team members.

The teams include :

- Football teams which compete in the Urdd and the Welsh Football Association competitions.
- Hockey teams which compete in the 'Mini Minor' league.
- Netball teams, which compete in the Welsh Netball Association and Urdd competitions.
- Rugby teams, which compete in Urdd competitions.
- Swimming teams, which compete in the Aberystwyth Area Sports Society and the Urdd galas.
- Cross country running teams, which compete in the Aberystwyth and Dyfed Area Sports Society and Urdd championships.
- Gymnastic teams

In addition, in Years 5 and 6 children are given the opportunity to attend residential centres which specialise in open air activities.



DESIGN TECHNOLOGY

The main feature of Design and Technology is that it gives pupils the opportunity to create pictures, plans, models, exhibitions and computer images from concepts in their imagination. Developing concepts from the very first idea through to the completed product as a practical consequence is a process called the Design Process.

RELIGIOUS EDUCATION AND COLLECTIVE WORKSHOP

The morning assemblies are an important part of Yr Ysgol Gymraeg's ethos. The religious aspect is linked to the children's own experiences in their everyday lives, emphasising religion's altruistic and caring aspects. The separate daily Service held in the classroom, as well as the general assemblies held in the Hall, are an important part of developing a feeling of community. The children are taught about other world religions, but the emphasis is on Christianity. Collections towards local and national humanitarian causes are arranged

Parents are allowed to remove their children from Religious Education lessons and collective worship for appropriate reasons.

MUSIC

An allocated sum of money is received to employ peripatetic teachers. Following aural tests, training is offered to those who are likely to benefit and to receive support at home. Training is arranged at the school. A fee is payable for the lessons in accordance with the school's policy.

Every child in the Junior Section is given an opportunity to learn to play the recorder and to have music lessons, which include singing, composition and instrumental work. An opportunity is given to join the School, Area and Ceredigion Orchestras.

For many years prominence has been given to vocal work and choral singing in the Ysgol Gymraeg pupil's school life. The Choir, the 'Cerdd Dant' Choir, the unison party and 'Cerdd Dant' party have been regular winners at the National Urdd Eisteddfod.

Christmas and Summer school concerts are held at the Great Hall where each and every pupil is given the opportunity to appear on stage





Ysgol Gymraeg
Aberystwyth

SEX EDUCATION

Education lessons are not provided. The School will teach Sex Education in accordance with National Curriculum requirements. If a question is asked by a child, the teacher is expected to give an honest and prudent answer in a sensitive manner, taking into consideration the child's level of maturity.

During their final term, Year 6 children are shown a video by the School Nurse, who also gives a talk on the body's development, appropriate to the children's feelings and level of maturity. Parents are welcome to arrange a meeting with the School Nurse before hand to see the material used in relation to Sex Education.

Parents are permitted to remove their children from part or whole of the sex education curriculum apart from that stipulated in the National Curriculum directive. No explanation is required from parents wishing to exclude their children.

Complaints regarding the Curriculum

Complaints regarding the Curriculum can be submitted in accordance with the provisions established under Section 409 of the Educational Reform Act 1996. Please contact the Headteacher for more information.

TEACHING AND LEARNING ORGANISATION

The class teacher is responsible for organising work within the classroom, with occasional assistance by specialists in some subjects.

In each section the children are divided into groups of mixed ability according to age. At times the school groups pupils according to ability in order to ensure the best provision for pupils of all abilities. Children are usually transferred from the Nursery at 5 years and from the Infants to the Junior Section at 7 years.

ADDITIONAL LEARNING NEEDS

A full time Special Needs teacher is employed to assist those pupils who have special educational needs. Individual attention or small group attention is given within the class by the class teacher as well as attention by the special needs teacher. If extra individual attention is required, the child is then referred to the County Psychological Service Department, where specialist provision could be arranged.



ADDITIONAL LEARNING NEEDS POLICY

Our aim is to develop a comprehensive and detailed means of assessment in order to identify each pupil's specific difficulties and to devise a work schedule that is relevant to that pupil. The school also considers talented pupils or those with a special ability as individuals with Additional Learning Needs.

Every child with special educational needs is included in the Special Needs Register. It is the school's responsibility to place children in the Stages described in the Code of Practice, and to monitor, review and allocate resources for this purpose out of the school budget and the funds which come with the placement of children in these stages in the Annual Inspection. It is the Authority's responsibility to provide a child with a Statement of Educational Needs.

It is the school's policy to consult with parents when a child is placed in any stage and/or referred for a usual or statutory assessment. We keep parents fully informed of any improvement in the child, and they are invited to every review. A full copy of the Additional Learning Needs policy can be seen at the school.

HOMework

There is a library in the teaching units. Children in the Infants Section are not given regular homework. They may take books home to practise reading. Children in the Junior Section are encouraged to borrow books.

Children in the Junior Section are given homework. The aim is to reinforce the work introduced at school. Parents are requested to encourage their children to read regularly and to do their homework promptly and neatly.

BOOK CLUBS

Children can join the Sbondonics, Sbri-di-ri and Wcw book clubs, as well as the Puffin Book Club and Cip in the Junior Section. Orders are taken for Urdd magazines.

A book fair is held during the year.

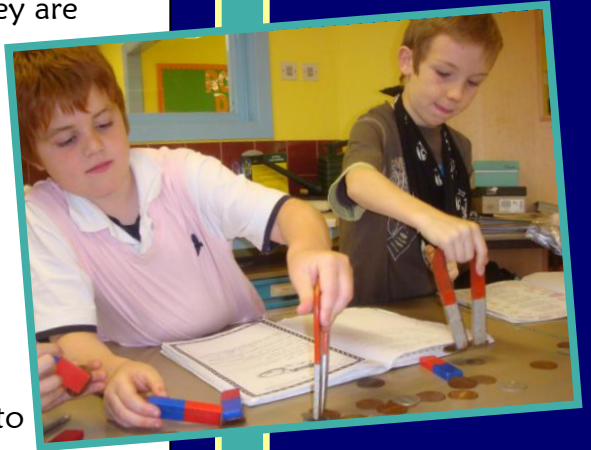
ASSESSMENT

Parents are given an annual written report on their child's progress. In accordance with the school's assessment policy, the children are assessed internally. In accordance with National Curriculum requirements, pupils are assessed at the end of Key Stage 2 by means of teacher assessment.

Enclosed are the school's aggregated assessment results under the National Curriculum for Key Stage 2, and the national comparative information (for the whole of Wales) based on the National Curriculum assessment results in Key Stage 2.



Ysgol Gymraeg
Aberystwyth





Ysgol Gymraeg
Aberystwyth

ASSESSMENT FOR TEACHING

Open sessions are held each term for the parents to see their children's work and to discuss their development with the teachers. Each teacher keeps detailed assessments of their pupils' work and discusses the 'way forward' with parents during the open evening.

ADMINISTRATION

PASTORIAL ARRANGEMENTS

The Headmaster is responsible for the school's pastoral arrangements. Class teachers are responsible for educational progress and for pastoral care of the children within their class.

If parents are in any way concerned about their children, they should initially contact the Headmaster in order to discuss the matter, and if necessary to arrange a meeting with the child's class teacher.



CHILD PROTECTION PROCEDURES

All members of staff within this school are responsible for the safety and protection of the children who attend. If there are concerns regarding neglect or physical, emotional or sexual abuse then, under the County's Child Protection Procedures, staff are duty bound to report the matter to the School's Child Protection Co-ordinator.

The school's Co-ordinator may consult with professional colleagues as well as relevant agencies such as Health and Social Services. Following these discussions the school's Co-ordinator may be obliged to make an official referral to the Social Services Department in accordance with county guidelines and protocol. It is the Social Services Department who decide on the next course of action.



Due to the nature of allegations it may not always be appropriate to discuss matters with parents prior to making a referral. The responsibility for investigating allegations lies with Social Services and the Police.

The Head Teacher is the School's Child Protection Co-ordinator.

SAFETY

ANTI-BULLYING POLICY

Every member of the school has a basic right to be respected by everyone and to enjoy a happy life at school. Any form of bullying is totally unacceptable. The school reacts firmly and thoroughly to every instance of bullying. The school will make every attempt to ensure that bullying does not occur.

The School Council meets regularly with the Head Teacher to discuss any matters which affect their rights as individuals. Parents should contact the school immediately if they are concerned about an instance of bullying.

SCHOOL RULES AND DISCIPLINE

Every child is expected to behave in an acceptable manner and as a member of a community within the school. Children are encouraged to respect the property and rights of others. Any punishment which is administered will be reasonable and moderate in accordance with the Education Authority's guidelines.

The school encourages self-discipline in accordance with the school's aims and objectives.

Running is not permitted in the building.

Sweets and crisps are not allowed to be eaten at school, but fresh fruit is welcomed.

Children are not permitted to bring valuable toys and property to school, unless specifically requested to do so by the class teacher. Rubbish should always be placed in bins.

Money or any valuable items should not be kept in coat pockets or bags. They should be handed over to teachers for safe keeping. Each class creates their own set of class rules each year. We consider the 'learner's voice' to be of great importance.

EQUAL OPPORTUNITIES

The school's main philosophy and aims are that the honesty, dignity and integrity of every individual is of the utmost importance. We strive to give every pupil and teacher equal opportunities on all occasions without discrimination on the basis of sex, religion, colour, language or disability.

PUPILS WITH DISABILITIES/ACCESSIBILITY PLAN

The school's layout ensures easy access to pupils and parents with disabilities. Special arrangements are made between school and home when a pupil with disabilities or Additional Learning Needs starts at the school. Please contact the Head Teacher for more information.

The school is sensitive towards the needs of pupils with disabilities and makes every effort to ensure that they are included in all aspects of Ysgol Gymraeg's life and work. We have purposeful rooms at the school to provide for the needs of pupils with disabilities.





Ysgol Gymraeg
Aberystwyth

EXTRA-CURRICULAR ACTIVITIES

The school has a strong tradition of extra-curricular activities, which include competing in eisteddfodau, performing in concerts, a comprehensive sports programme and various clubs.

URDD

There have been close contacts with the Urdd from the beginning, since it was at the Urdd Centre in Llanbadarn Road that the seeds of Welsh Education were planted and the founder of the Urdd, Syr Ifan ab Owen Edwards, was the school's first President. The Urdd group (Adran yr Urdd) meets regularly after school on Wednesday afternoons during Christmas and Easter terms. Much use is made of parents' expertise to assist the teaching staff.

The School has a strong tradition of competing in eisteddfodau. Members of the Urdd have an opportunity to compete in all Urdd activities, including sports.

VISITS

Visits are arranged based on the term's educational theme. The class teachers research appropriate visits which will enrich effective teaching and learning. Visitors are invited to the school to address the children.

PAYMENTS

A request is made for voluntary contributions to cover transport costs for educational visits. Half the transport costs for all visits are sponsored by the Parent Teacher Association. Year 5 and 6 pupils are given the opportunity to spend three days at the Urdd camp at Glanllyn or Llangrannog each year. The school asks for a contribution towards instrument lessons and residential visits. The relevant information is sent to parents in the form of a letter when relevant. If a child receives free school lunches then no payment is needed. The school is always ready to discuss when a parent/guardian is worried about costs relating to the school.

Absences With and Without Permission

This information is enclosed as an appendix every year in the Headmaster's annual report to the Governing body.

BAD WEATHER

Every attempt is made to keep the school open. If in any doubt, keep the child at home or phone the school. Occasionally, children will have to be sent home early but the school will phone the child's home first.



SCHOOL LUNCHES

Lunch is cooked in the school kitchen. Children may bring sandwiches. Glass bottles are not permitted. The children are supervised at lunchtime by assistants.

The dinner money is collected by a clerical assistant each Monday morning or on the first day of the school week. Some families are eligible for free lunches. Application forms are available from the school.

The school is a member of the 'Healthy Schools Network' and puts great emphasis on healthy eating and regular exercise.

SUPPORT SERVICES

The nurse and dentist visit the school from time to time.

It is possible to talk to the nurse at any time by phoning 01970 635337.

A child may be referred to the Speech Therapist at the Headmaster's request

Parents are kindly requested to inform the school of any physical disability which may impair the development of their child.

Senior children are given a series of Cycling Proficiency lessons.

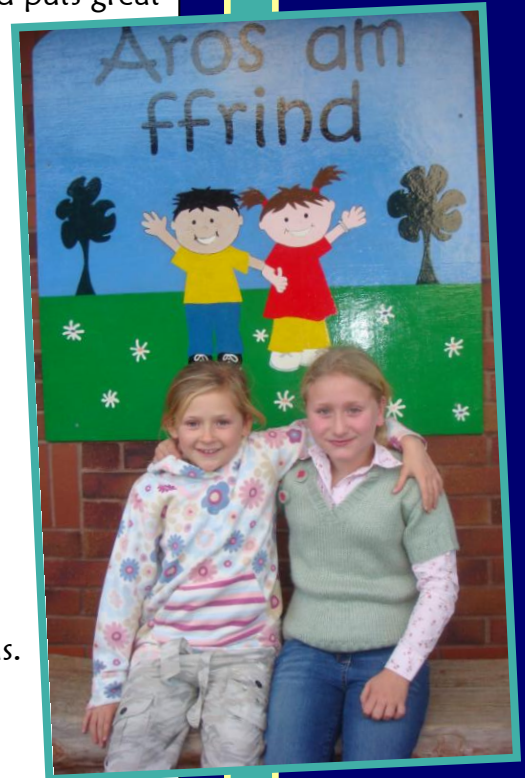
IN-SERVICE TRAINING

In-service training and curricular development is organised during the academic year. On these days the school will be closed for pupils. Appropriate warnings of the dates of closure will be given.

SCHOOL UNIFORM

Children are encouraged to wear a white T-shirt with a red sweatshirt both bearing the school's logo. Children are expected to be tidily and appropriately dressed.

All articles of clothing should be labelled. For more information contact the school secretary.





Ysgol Gymraeg
Aberystwyth

PHYSICAL EXERCISE KIT

Key Stage 1

- Light trousers
- T-shirt
- Strong trainers

Key Stage 2

- Strong trainers
- Football boots
- Sports shirt or jumper
- Trousers (long and short)
- Bathing suit and towel



Suitable clothes can be lent to children who are members of school teams.

No child is allowed to wear jewellery during Physical Education lessons.

Parents should ensure that a child has clean clothing to wear after a Physical Education lesson.

PARENT TEACHER ASSOCIATION

The school has a very supportive Parent Teacher Association.

The annual meeting is held during the autumn term and a programme of activities is arranged for the coming year. Simultaneous translation is provided at all meetings.

The activities of the school are supported by an enthusiastic community who contribute generously to funds.

LANGUAGE WORKING GROUP

Promoting the use of the Welsh language

The school has a working group which has two main aims. Developing parents' awareness and understanding of the school's activities in the Early Years and Key Stage 1. Promoting parents' opportunities to support their children's education by developing opportunities to learn Welsh and to practice using the language during informal meetings.

We are eager for your child to be happy among us. Only in a happy and homely atmosphere can a child develop and work to his/her full potential.



Points / Guidelines for parents to follow as a preparation for school

- Don't 'talk down' to your child.
- It will be helpful for the child to discuss visits and parents should converse with them regularly.
- Watch and discuss select television programmes together.
- Parents are encouraged to read to their children every day and to play with them and to discuss with them when shopping and cooking.
- There is no need to do any formal work as such but a child's awareness of numbers can be enhanced by teaching
- Make use of your local Nursery group so that you can prepare your child socially and linguistically for Welsh medium
- Help your child with tasks such as dressing, tying shoe laces, going to the toilet (the child must be out of nappies before starting school), the use of a knife and fork and tidying up.
- Develop activities which encourage conversation and self-confidence.
- Help your child to become familiar with the shape of his/her name.
- Do not use capital letters e.g. Catrin not CATRIN.

ANNUAL SUPPLEMENTS – enclosed in the file you will find:

- A list of members of staff
- A list of Governors
- Information about school holidays and In-service Training days
- Attendance
- Assessment results.

REMEMBER

'What a child can achieve with assistance today, he/she will be able to achieve on his own tomorrow.'

IF YOU HAVE ANY CONCERNS REGARDING YOUR CHILD'S EDUCATION THEN CONTACT ME IMMEDIATELY.

R C Williams, Head Teacher



Ysgol Gymraeg
Aberystwyth

